



, WEMYSS BAY HOLIDAY PARK, WEMYSS
BAY, PA18 6BA



neillclerk
ESTATE AGENTS



Description

This stylish well presented three bedroom DETACHED HOLIDAY CHALET enjoys a prime position with the Parkdean Wemyss Bay Holiday Park. The property commands views beyond trees towards the Firth of Clyde which continues to Arran, Bute and the Cowal Peninsula. A particular feature is the front facing decked balcony which offers ample space for a table and chairs, plus is well placed for enjoying summer sunsets over Cowal. A further bonus is that all the internal furniture and fittings are included with the sale.

Conveniently located for the Clyde coast and Wemyss Bay with its ferry terminal with sailings to Isle of Bute, plus railway station with frequent rail service to Glasgow. Specification includes: double glazing and propane gas fired central heating. There is a pebbled driveway with space for one car. The holiday park features access to a resident's swimming pool, restaurant, children's play area and shop.

Residents are permitted to stay in the lodge for up to 10 months per annum. We are advised annual site fees are around £5500. The current owner advises they successfully have rented their lodge as a holiday let for £800 per week.

Impressive apartments comprise: Entrance Area is reached by UPVC double glazed door which is on open plan to the Lounge / Dining Room / Kitchen offering contemporary open plan living. The lounge/dining room is bright and spacious apartment featuring windows to the sides and rear with patio door giving direct access to the balcony.

There is a quality fitted Kitchen with side window and soft cream high gloss units and black/grey marble style work surfaces. Appliances include: stainless steel chimney extractor hood, gas cooker, integrated dishwasher, fridge, freezer, washing machine and microwave.

An Inner Hallway leads to the remaining apartments. The Master Bedroom gives access to a Dressing Room which in turn leads to the Ensuite Shower Room with three piece suite offering: vanity wash hand basin set within cream unit, wc and shower cubicle with chrome style shower. There are two further double sized Bedrooms. The Shower Room comprises: three piece suite with vanity wash hand basin within cream unit, wc and shower cubicle with chrome style shower.

Early inspection is highly recommended.

Measurements

Entrance Area

Lounge / Dining Room
4.34 x 5.84 (14'3" x 19'2")

Kitchen
2.84 x 3.00 (9'4" x 9'10")

Inner Hallway

Master Bedroom
3.43 x 2.59 (11'3" x 8'6")

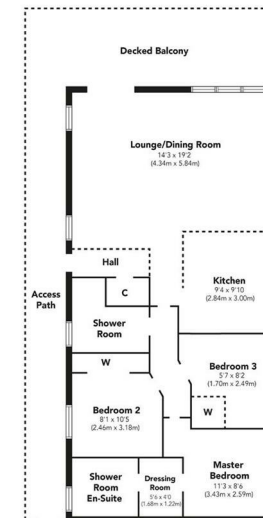
Dressing Room
1.68 x 1.22 (5'6" x 4'0")

Ensuite Shower Room

Bedroom 2
2.46 x 3.18 (8'1" x 10'5")

Bedroom 3
1.70 x 2.49 (5'7" x 8'2")

Shower Room



Floorplans are indicative only - not to scale
Produced by Plush Plans Ltd











The
next
step..



To view call 01475 888400. Speak to us 7 days a week until 11pm every day to book your viewing appointment.

House to sell or rent?

Call 01475 888400 to book your free market appraisal.

Require a solicitor?

Ask us to supply a free legal quotation from Neill Clerk & Murray, Solicitors.
www.neillclerkmurray.co.uk

Stay fully up-to-date by following Neill Clerk on:



**60 West Blackhall Street
Greenock
Renfrewshire
PA15 1UY**

t: 01475 888400

e: sales@neillclerk.co.uk

w: www.neillclerk.co.uk



Agents Notes:

These sales particulars are set out as a general outline only, issued in good faith, but do not constitute representations of fact and do not form part of any offer or contract. Any services, equipment, appliances, fittings or central heating systems have not been tested and no warranty is given or implied that these are in working order. All measurements are approximate and for guidance only.

Neither Neill Clerk Estate Agents nor any of its employees or agents has any authority to make or give any representation or warranty whatever in relation to this property.

Find all our properties at: [rightmove](https://www.rightmove.co.uk) [Zoopla](https://www.zoopla.co.uk) [onTheMarket.com](https://www.onthemarket.com) [s1homes.com](https://www.s1homes.com)